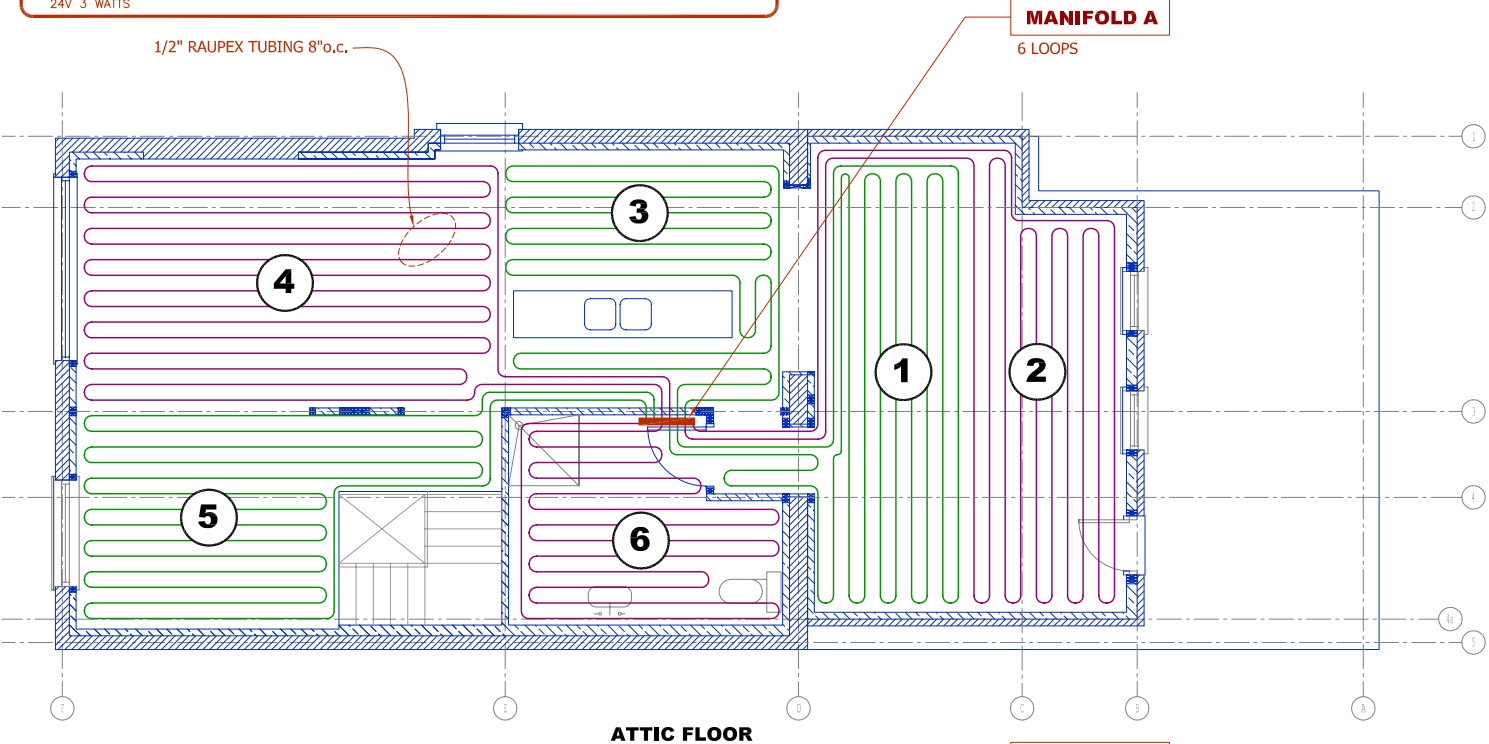


**LEGEND:**

- RAUPEX TUBING
- REHAU MANIFOLD

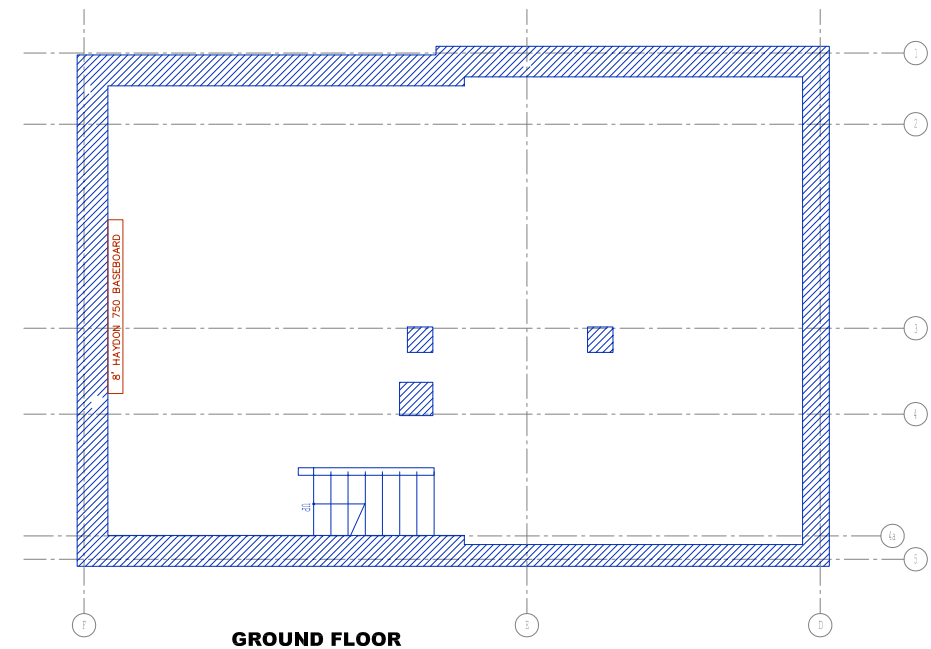
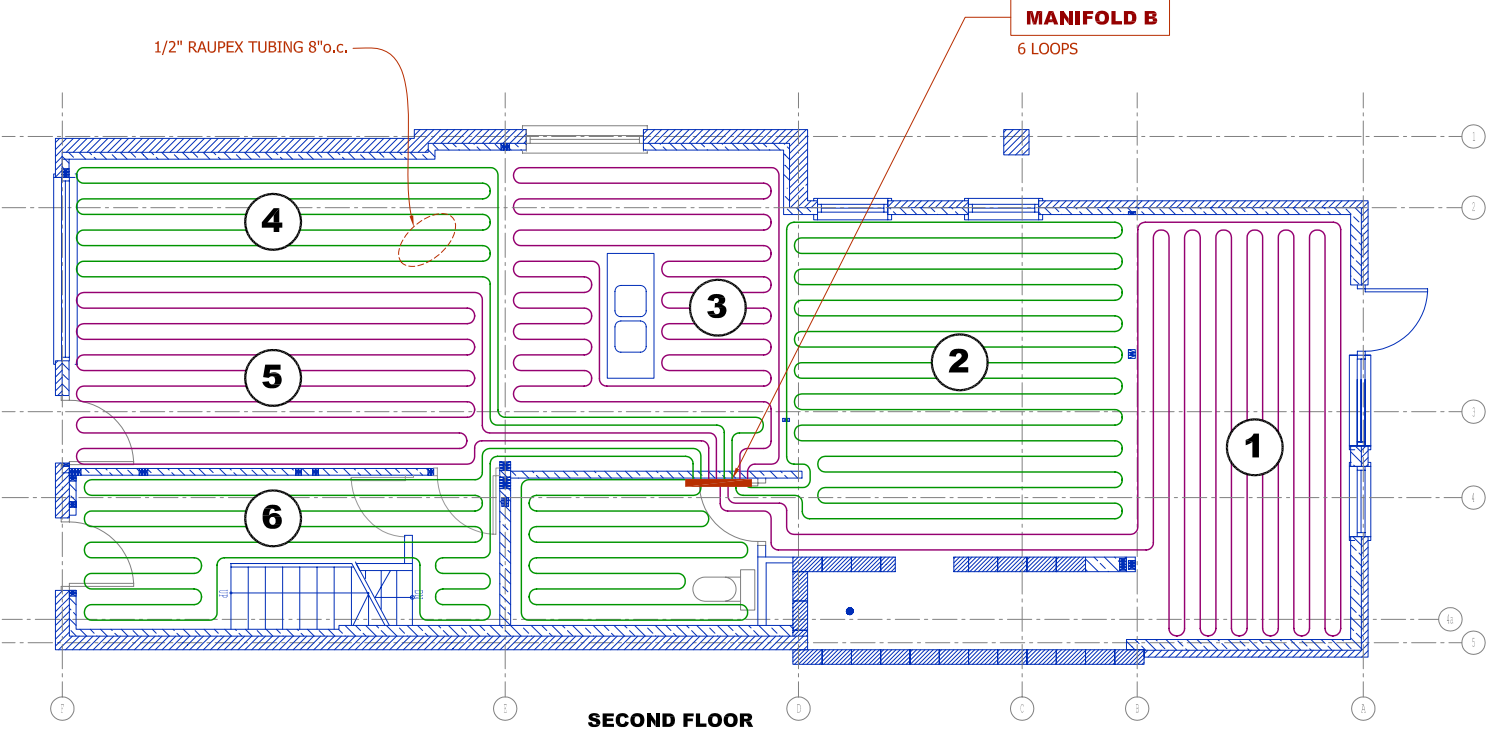
**NOTES:**

1. ALL TUBE SPACING SHALL BE 8" o.c. AS SHOWN UNDER ZONES UNLESS OTHERWISE NOTED.
2. A MINIMUM OF 1" OF COVER SHALL BE REQUIRED OVER THE RAUPEX TUBING.
3. RAUPEX TUBING SHALL BE PRESSURE TESTED TO A MINIMUM OF 60psig FOR A MINIMUM DURATION OF 12 HOURS AND DURING CONCRETE POUR.
4. THE REHAU PROJECT START-UP AND SITE INSPECTION REPORT MUST BE COMPLETED PRIOR TO THERMAL MASS INSTALLATION.
5. THE INSTALLING CONTRACTOR SHALL RECORD ACTUAL INSTALLED TUBING LENGTHS FOR BALANCING PURPOSES.
6. THIS DRAWING SHALL ACT AS AN INSTALLATION GUIDE ONLY, DO NOT SCALE DRAWING.
7. THIS DRAWING SHALL BE READ IN CONJUNCTION WITH ALL OTHER CONTRACT DOCUMENTS AND SPECIFICATIONS.
8. ATTACH RAUPEX TUBING WITH REBAR OR WIRE MESH REINFORCING.
9. RAUPEX TUBING COMPLETE WITH OXYGEN DIFFUSION BARRIER AND RATED FOR 180°F @ 100 psi.
10. STAY 6" AWAY FROM PARTITIONS (IF POSSIBLE), DRAINS, FLOOR PENETRATIONS.



MANIFOLD	FLOW (GMP)	PRESSURE DROP (ft)	LOOP #	LENGTH (ft)	AS BUILT LENGTH (ft)	FLOW BALANCING TURNS
A			1	220		
			2	235		
			3	150		
			4	315		
			5	220		
			6	135		

MANIFOLD	FLOW (GMP)	PRESSURE DROP (ft)	LOOP #	LENGTH (ft)	AS BUILT LENGTH (ft)	FLOW BALANCING TURNS
B			1	295		
			2	305		
			3	190		
			4	190		
			5	245		
			6	265		



NO.	DATE	ISSUED	BY
	MAR,06		

**DISCLAIMER**  
Provided only for general quotation purposes. No representations, warranties, or guarantees are made as to the suitability of the drawing to meet code requirements for any particular project, nor to the accuracy of the costing of any project based upon this drawing. The user must determine suitability of the drawing and information for user's intended use and shall assume all risk and liability in connection therewith, including that the user must seek on his own licensed local professional advice for any particular project. REHAU DISCLAIMS ALL WARRANTIES, EXPRESS OR IMPLIED, INCLUDING BUT NOT LIMITED TO ANY IMPLIED WARRANTIES OF MERCHANTABILITY OR FITNESS FOR A PARTICULAR PURPOSE.

Copyright 2006 REHAU, Inc.. All Rights Reserved, in particular rights concerning translation, reproduction, making photocopies, electronic transmissions, reproduction in photographs or by similar means and the archiving of this document in a database are not permitted.

**KLIMATROL**  
ENVIRONMENTAL SYSTEMS LTD.  
10A BRAM COURT  
UNIT 1  
BRAMPTON, ONTARIO  
L6W 3R6  
TEL: (905)454-1742 FAX: (905)454-0390

CONTRACTOR:

PROJECT:  
**SISTEMALUX**  
121 BARTON AVENUE  
TORONTO, ONTARIO

DRAWING:  
 1501 Edwards Ferry Rd.  
Leesburg, VA. 20176  
NORTH AMERICAN  
CORPORATE HEADQUARTERS  
Telefax: (703) 777-3053  
Phone: (703) 777-5255

DATE: MARCH 6, 2006	SHEET No. 1 OF 1
SCALE: N.T.S.	PROJECT No. 1348
DRAWN BY: S.D.	CHECKED BY: -